

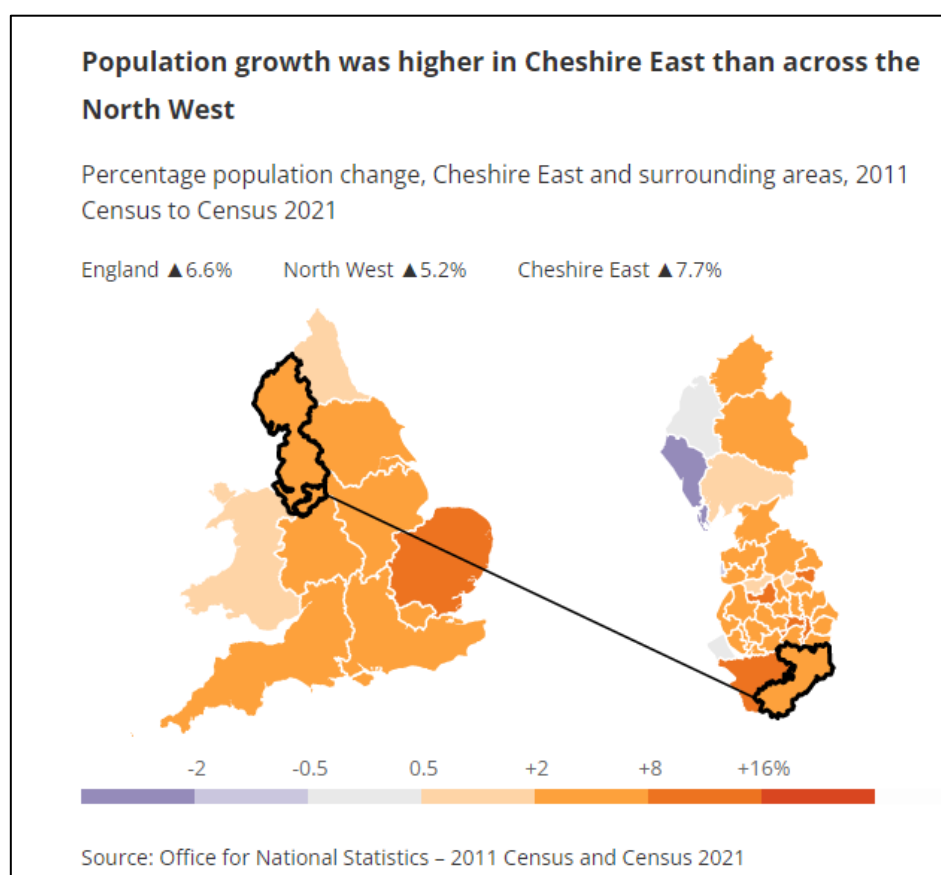
How life has changed in Cheshire East: Census 2021

The population reached nearly 400,000

Between the last two censuses (held in 2011 and 2021), the population of Cheshire East increased by 7.7%, from around 370,100 in 2011 to around 398,800 in 2021.

The population in Cheshire East increased by a greater percentage than the overall population of the North West (5.2%), and by a greater percentage than the overall population of England (up 6.6% since the 2011 Census).

In 2021, Cheshire East was home to around 2.4 people per football pitch-sized piece of land, compared with 2.3 in 2011. Cheshire East was among the lowest 35% local authorities for population density across all English local authority areas at the last census.



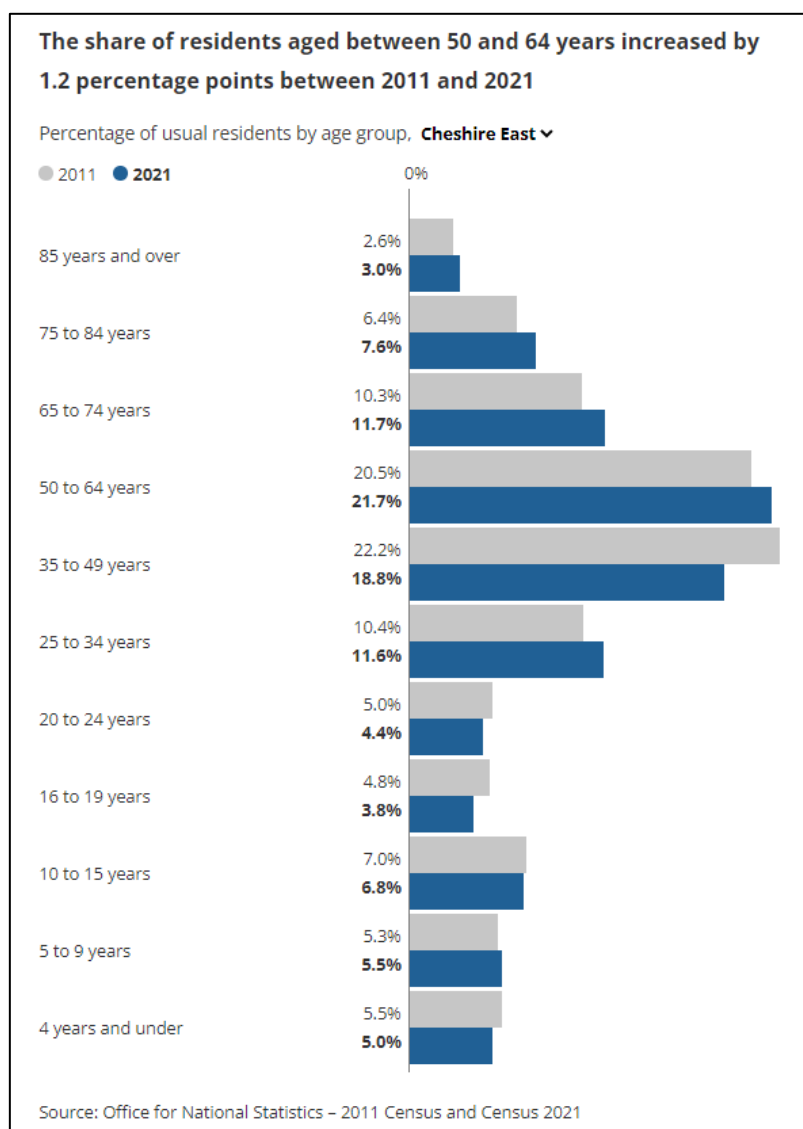
An older Cheshire East

Between the last two censuses, the average (median) age of Cheshire East residents increased by two years, from 43 to 45 years of age.

Cheshire East had a higher average (median) age than the North West as a whole in 2021 (40 years) and a higher average (median) age than England (40 years).

The median age is the age of the person in the middle of the group, meaning that one half of the group is younger than that person and the other half is older.

The number of people aged 50 to 64 years rose by just under 10,600 (an increase of 13.9%), while the number of residents between 35 and 49 years fell by just over 7,500 (9.1% decrease).



Disability in Cheshire East

In 2021, 6.5% of Cheshire East residents were identified as being disabled and limited a lot. This figure decreased from 7.8% in 2011. These are age-standardised proportions.

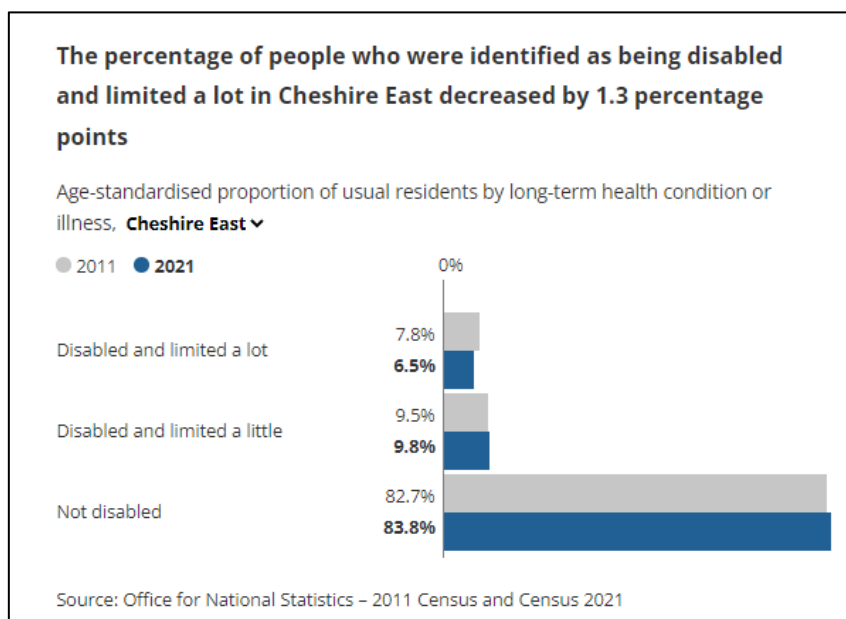
Age-standardised proportions are used throughout this section. They enable comparisons between populations over time and across geographies, as they account for differences in the population size and age structure.

In 2021, just under 1 in 10 people (9.8%) were identified as being disabled and limited a little, compared with 9.5% in 2011. The proportion of Cheshire East residents who were not disabled increased from 82.7% to 83.8%.

The decrease in the proportion of residents who were identified as being disabled and limited a lot was greater across the North West (2.1 percentage points, from 11.2% to 9.1%) than in Cheshire East (1.3 percentage points). Across England, the proportion fell by 1.6 percentage points, from 9.1% to 7.5%.

Census 2021 was undertaken during the coronavirus (COVID-19) pandemic. This may have influenced how people perceived their health status and activity limitations, and therefore may have affected how people chose to respond.

Caution should be taken when making comparisons between 2011 and 2021 because of changes in question wording and response options.

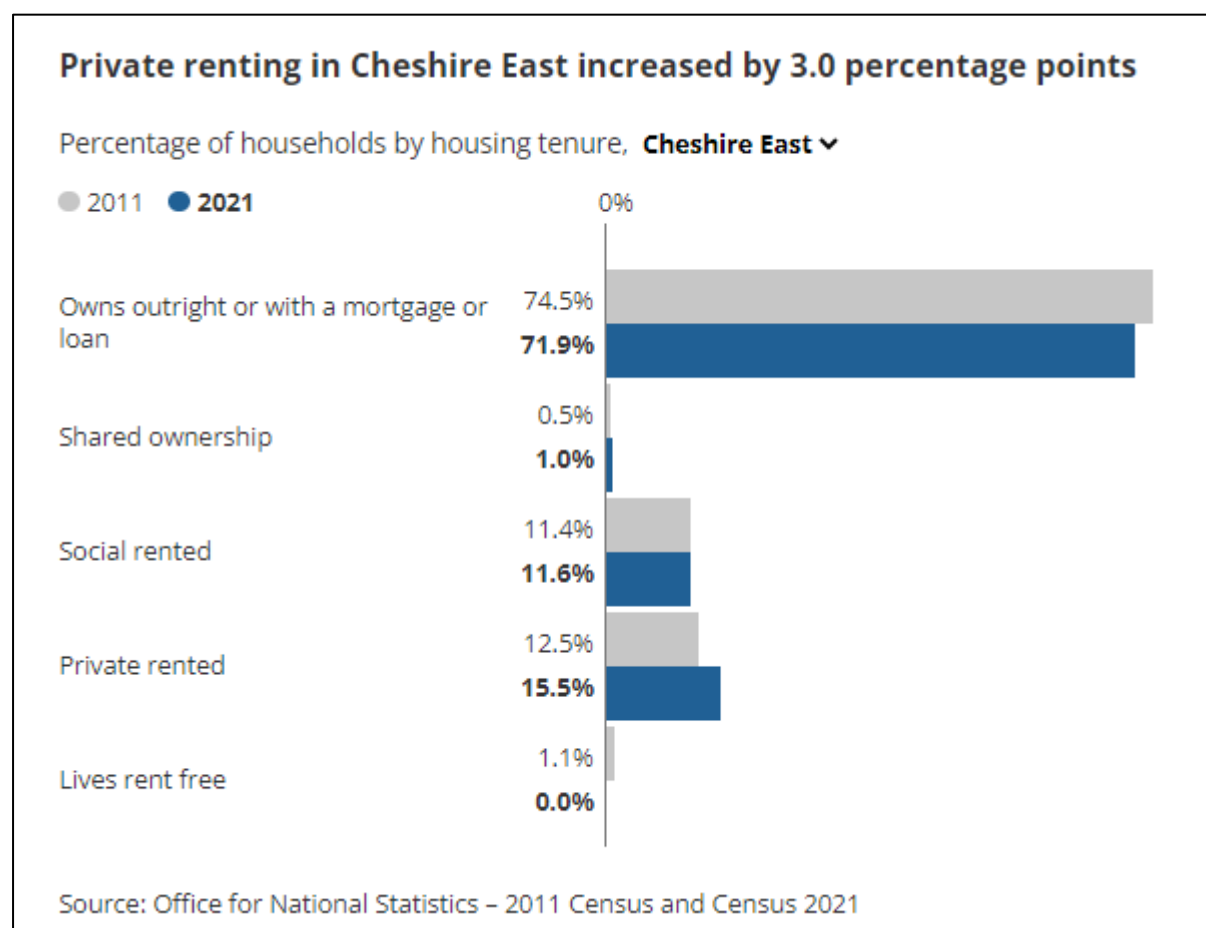


Rise in private renting

Of all Cheshire East households, 15.5% rented privately in 2021, up from 12.5% in 2011.

In 2021, just over one in nine households (11.6%) lived in socially rented housing, compared with 11.4% in 2011. The percentage of Cheshire East households that owned their home (outright or with a mortgage or loan) decreased from 74.5% to 71.9%.

The increase in the percentage of privately-rented homes was greater across the North West (3.9 percentage points, from 15.4% to 19.2%) than in Cheshire East (3.0 percentage points). Across England, the percentage increased by 3.6 percentage points, from 16.8% to 20.5%.



Unpaid care in Cheshire East

In 2021, 4.8% of Cheshire East residents (aged five years and over) reported providing up to 19 hours of unpaid care each week. This figure decreased from 7.6% in 2011. These are age-standardised proportions.

Age-standardised proportions are used throughout this section. They enable comparisons between populations over time and across geographies, as they account for differences in the population size and age structure.

In 2021, 1.6% of residents (aged five years and over) reported providing between 20 and 49 hours of unpaid care each week, compared with 1.2% in 2011. The proportion of Cheshire East residents (aged five years and over) that provided at least 50 hours of weekly unpaid care increased from 2.3% to 2.4%.

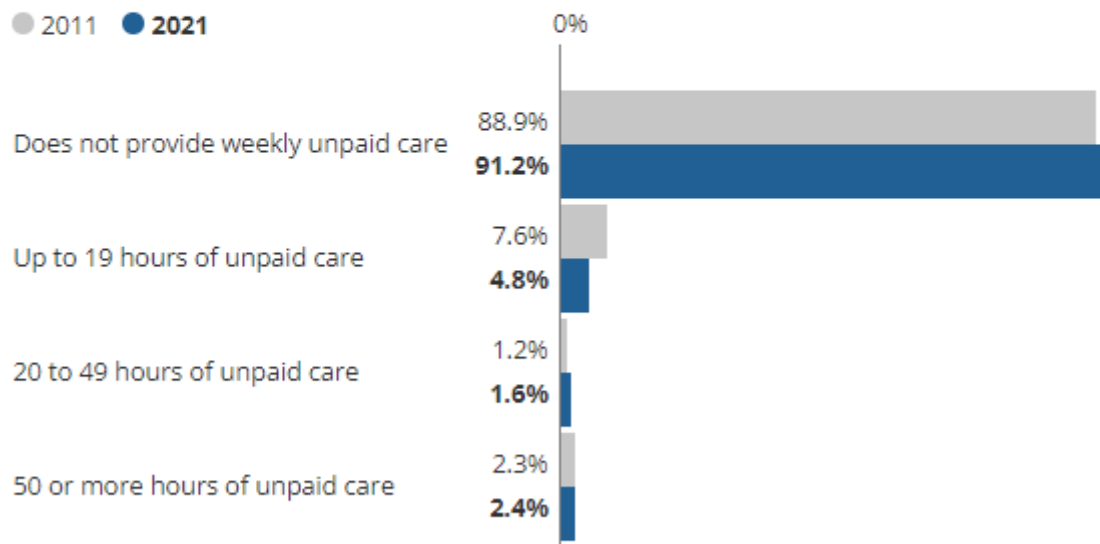
The decrease in the proportion of people (aged five years and over) providing up to 19 hours of weekly unpaid care in Cheshire East (2.8 percentage points) was similar to the decrease across the North West (2.7 percentage points, from 7.2% to 4.5%). Across England, the proportion fell by 2.8 percentage points, from 7.2% to 4.4%.

Census 2021 was undertaken during the coronavirus (COVID-19) pandemic. This may have influenced how people perceived and managed their provision of unpaid care, and therefore may have affected how people chose to respond.

Caution should be taken when making comparisons between 2011 and 2021 because of changes in question wording and response options.

The percentage of people (aged five years and over) providing up to 19 hours of weekly unpaid care in Cheshire East decreased by 2.8 percentage points

Age-standardised proportion of usual residents (aged five years and over) by hours per week of unpaid care provision, **Cheshire East** ▼



Source: Office for National Statistics – 2011 Census and Census 2021

Religion in Cheshire East

In 2021, 37.7% of Cheshire East residents reported having "No religion", up from 22.7% in 2011. The rise of 15.0 percentage points was the largest increase of all broad religious groups in Cheshire East. Because the census question about religious affiliation is voluntary and has varying response rates, caution is needed when comparing figures between different areas or between censuses.

Across the North West, the percentage of residents who described themselves as having "No religion" increased from 19.8% to 32.6%, while across England the percentage increased from 24.8% to 36.7%.

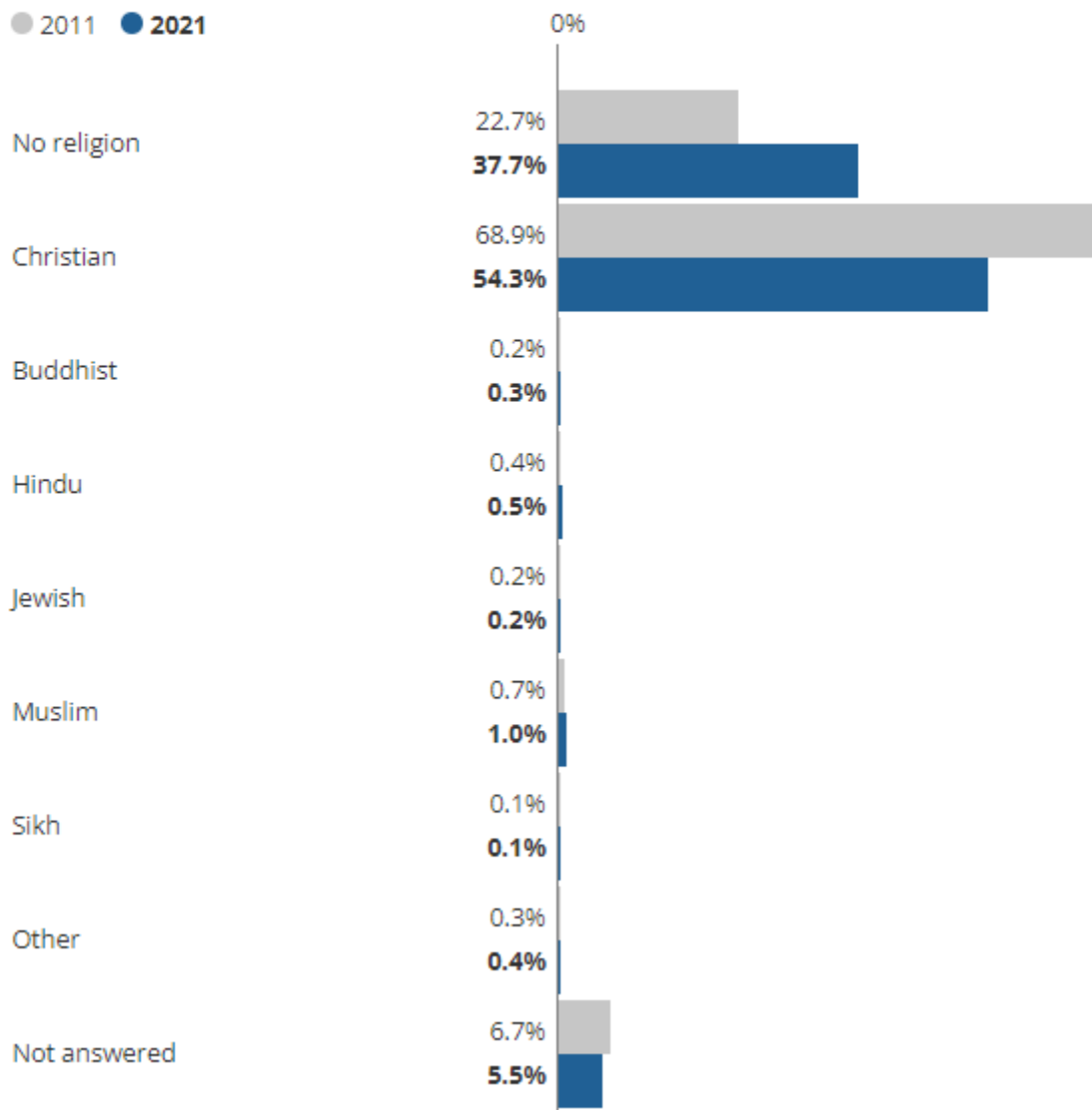
In 2021, 54.3% of people in Cheshire East described themselves as Christian (down from 68.9%), while 5.5% did not state their religion (down from 6.7% the decade before).

There are many factors that can cause changes to the religious profile of an area, such as a changing age structure or residents relocating for work or education.

Changes may also be caused by differences in the way individuals chose to self-identify between censuses. Religious affiliation is the religion with which someone connects or identifies, rather than their beliefs or religious practice.

In 2021, 37.7% of usual residents in Cheshire East reported having "No religion"

Percentage of usual residents by religion, **Cheshire East** ▼



Cheshire East residents' country of birth

In the latest census, around 352,300 Cheshire East residents said they were born in England. This represented 88.3% of the local population. The figure has risen from just under 336,200 in 2011, which at the time represented 90.8% of Cheshire East's population.

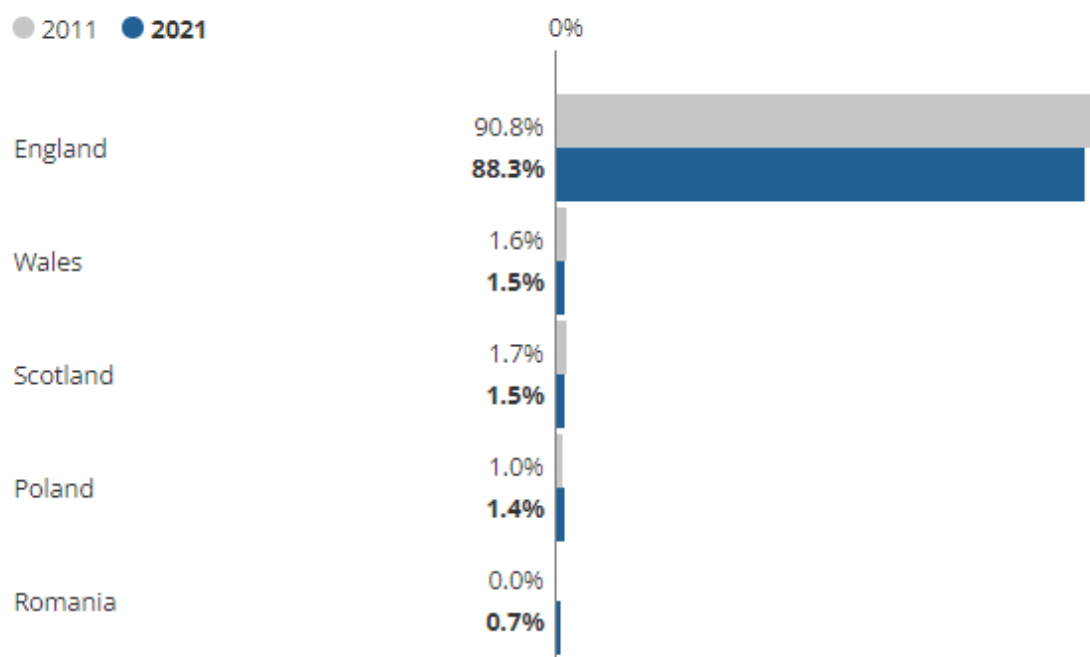
Wales was the next most represented, with around 5,900 Cheshire East residents reporting this country of birth (1.5%). This figure was up from just over 5,800 in 2011, which at the time represented 1.6% of the population of Cheshire East.

The number of Cheshire East residents born in Scotland fell from just over 6,200 in 2011 (1.7% of the local population) to just under 5,900 in 2021 (1.5%).

In 2021, 88.3% of Cheshire East residents reported their country of birth as England

Percentage of usual residents by country of birth, **Cheshire East** ▼

● 2011 ● 2021



Source: Office for National Statistics – 2011 Census and Census 2021

People looking after their family or home in Cheshire East

In 2021, 3.5% of Cheshire East residents (aged 16 years and over) said they were economically inactive because they were looking after their family or home. This figure increased from 3.2% in 2011.

In 2021, just under 6 in 10 people (57.2%) said they were employed (excluding full-time students), compared with 57.9% in 2011. The percentage of Cheshire East residents who were unemployed (excluding full-time students) decreased from 2.9% to 2.1%.

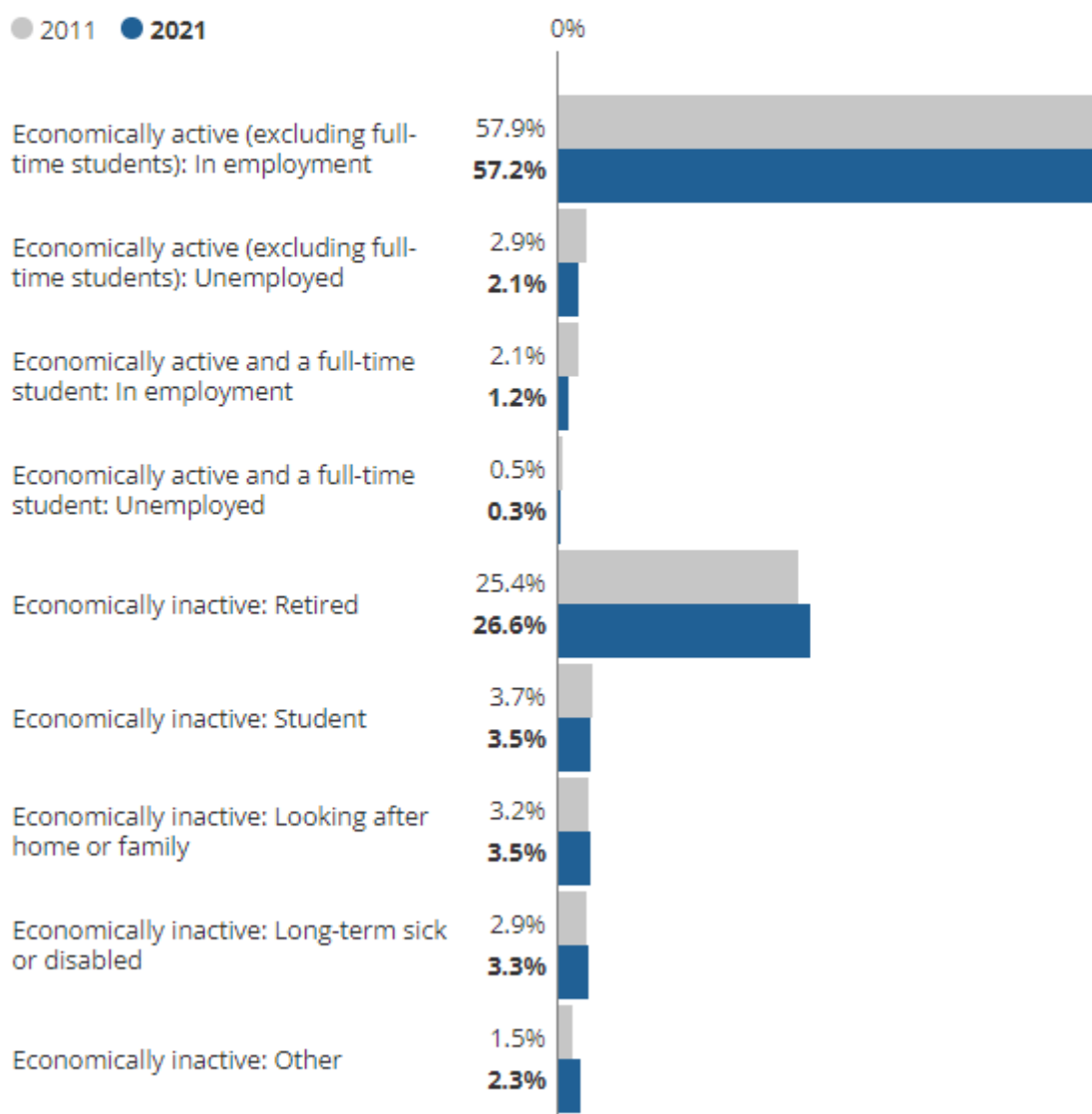
The increase in the percentage of people who were economically inactive because they were looking after their family or home was greater across the North West (1.1 percentage points, from 3.6% to 4.7%) than in Cheshire East (0.3 percentage points). Across England, the percentage increased by 0.8 percentage points, from 4.0% to 4.8%.

Census 2021 took place during the coronavirus (COVID-19) pandemic, a period of rapid and unparalleled change; the national lockdown, associated guidance and furlough measures will have affected the labour market and our ability to measure it.

The percentage of people aged 16 years and over who were looking after their family or home (economically inactive) in Cheshire East increased by 0.3 percentage points

Percentage of usual residents aged 16 years and over by economic activity status,

Cheshire East ▼



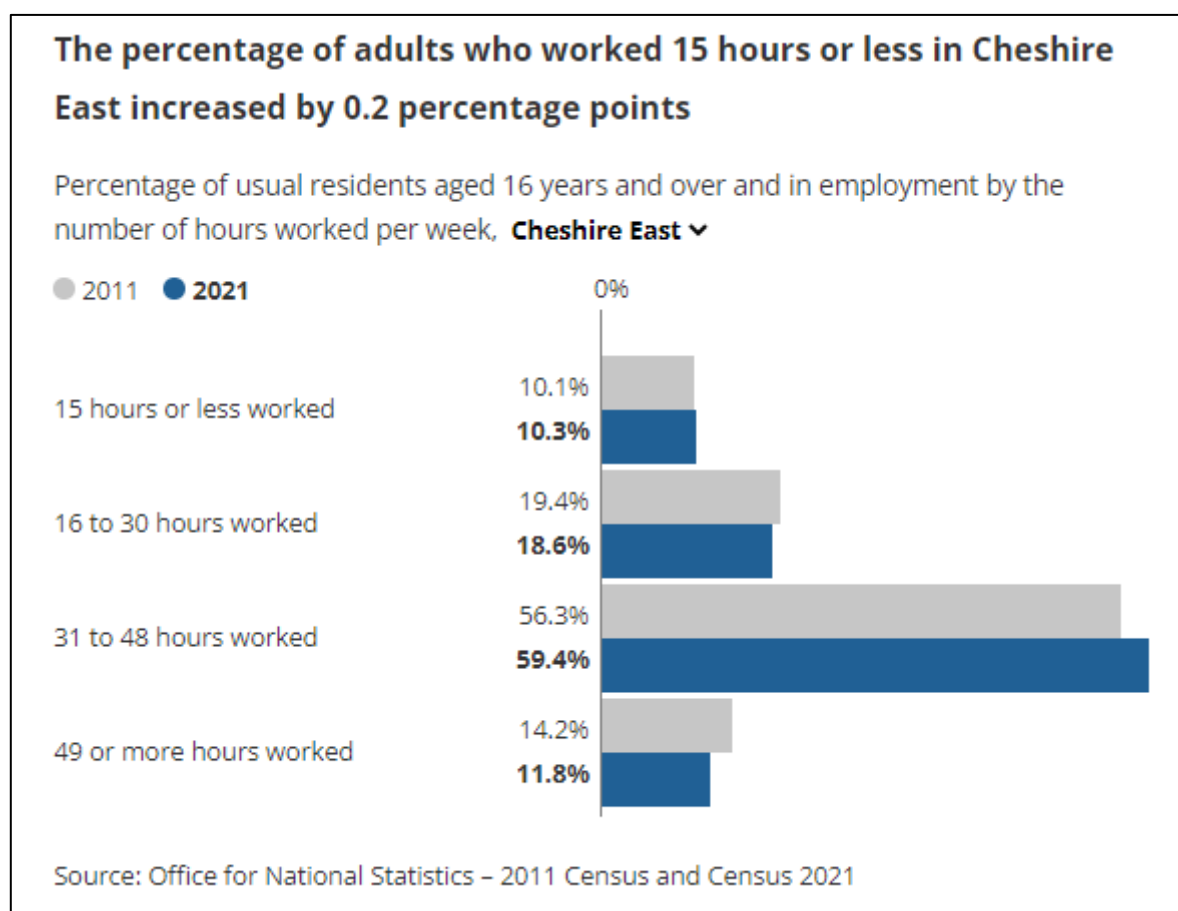
Source: Office for National Statistics – 2011 Census and Census 2021

Working hours in Cheshire East

In 2021, 10.3% of Cheshire East residents aged 16 years and over and in employment said they worked 15 hours or less per week. This figure was at a similar level in 2011 (10.1%).

The percentage of people aged 16 years and over and in employment who said they usually worked 15 hours or less per week increased from 9.1% to 9.6% across the North West. Across England, the percentage increased from 9.7% to 10.3%.

Working hours may have been affected by the coronavirus (COVID-19) pandemic.



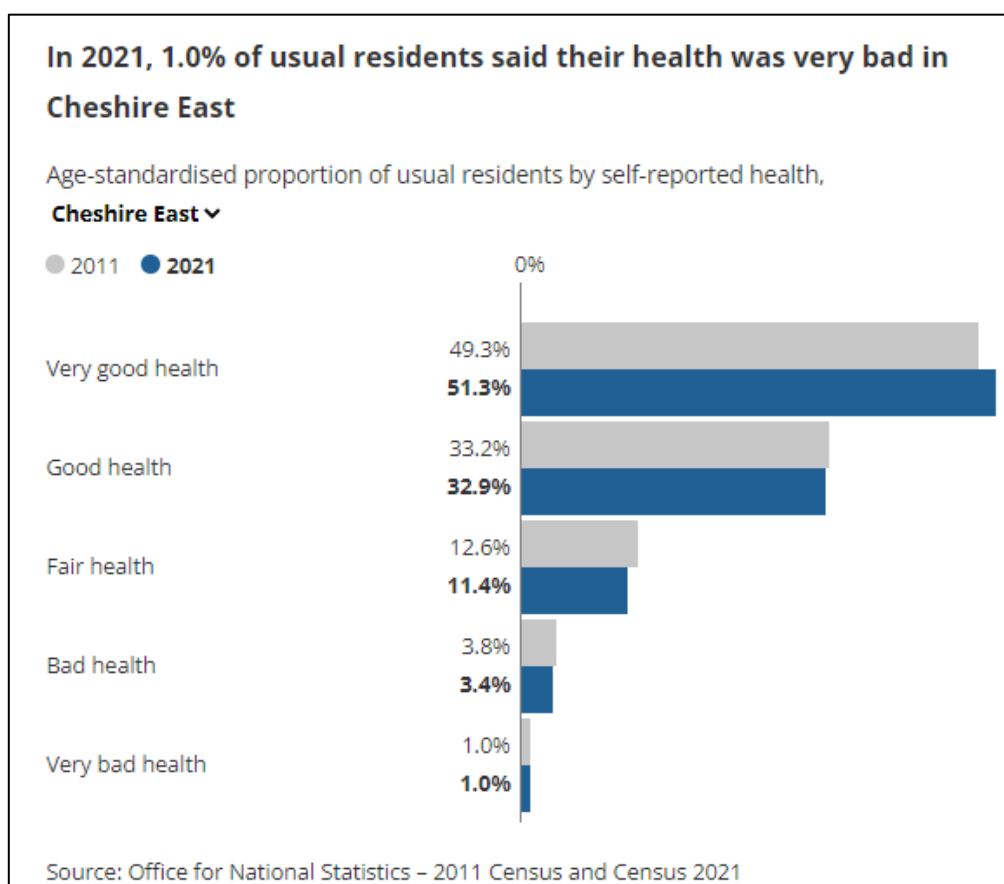
Health in Cheshire East

In 2021, 51.3% of Cheshire East residents described their health as "very good", increasing from 49.3% in 2011. Those describing their health as "good" fell from 33.2% to 32.9%. These are age-standardised proportions.

Age-standardised proportions are used throughout this section. They enable comparisons between populations over time and across geographies, as they account for differences in the population size and age structure.

The proportion of Cheshire East residents describing their health as "very bad" remained 1.0%, while those describing their health as "bad" fell from 3.8% to 3.4%. These data reflect people's own opinions in describing their overall health on a five point scale, from very good to very bad.

Census 2021 was conducted during the coronavirus (COVID-19) pandemic. This may have influenced how people perceived and rated their health, and therefore may have affected how people chose to respond.



National identity in Cheshire East

In 2021, 5.4% of Cheshire East residents did not identify with any national identity associated with the UK. This figure increased from 3.4% in 2011.

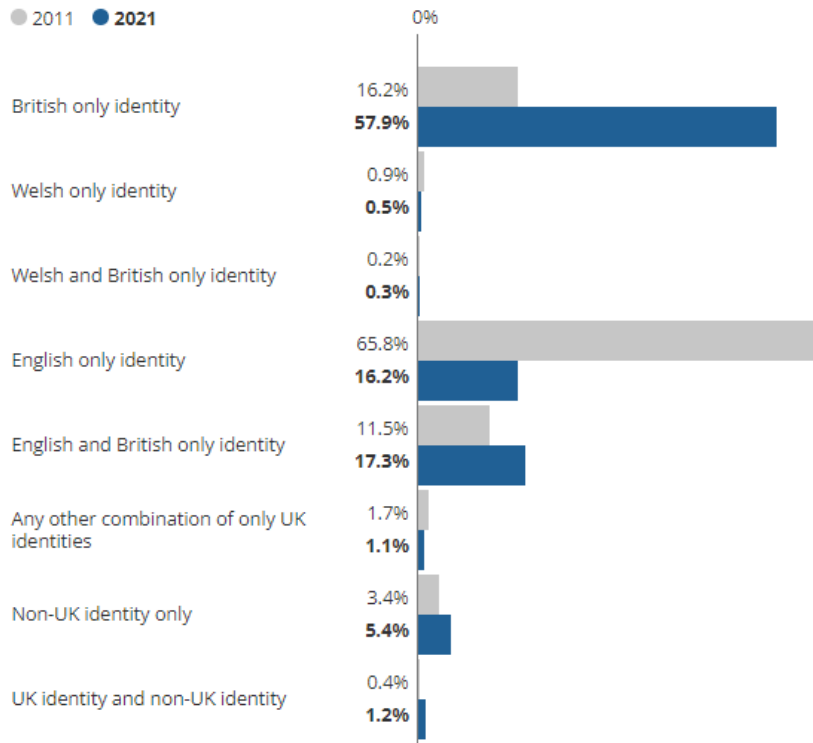
In 2021, 1.2% of residents identified with a UK and non-UK national identity, compared with 0.4% in 2011. The percentage of residents in Cheshire East that identified as "British only" increased from 16.2% to 57.9%.

The increase in the percentage of people who did not identify with any national identity associated with the UK in Cheshire East (2.0 percentage points) was similar to the increase across the North West (2.3 percentage points, from 4.7% to 7.1%). Across England, the percentage increased by 1.7 percentage points, from 8.2% to 10.0%.

In Census 2021, "British" was moved to the top response option and this may have influenced how people described their national identity.

The percentage of people who did not identify with at least one UK national identity in Cheshire East increased by 2.0 percentage points

Percentage of usual residents by national identity, **Cheshire East** ▼



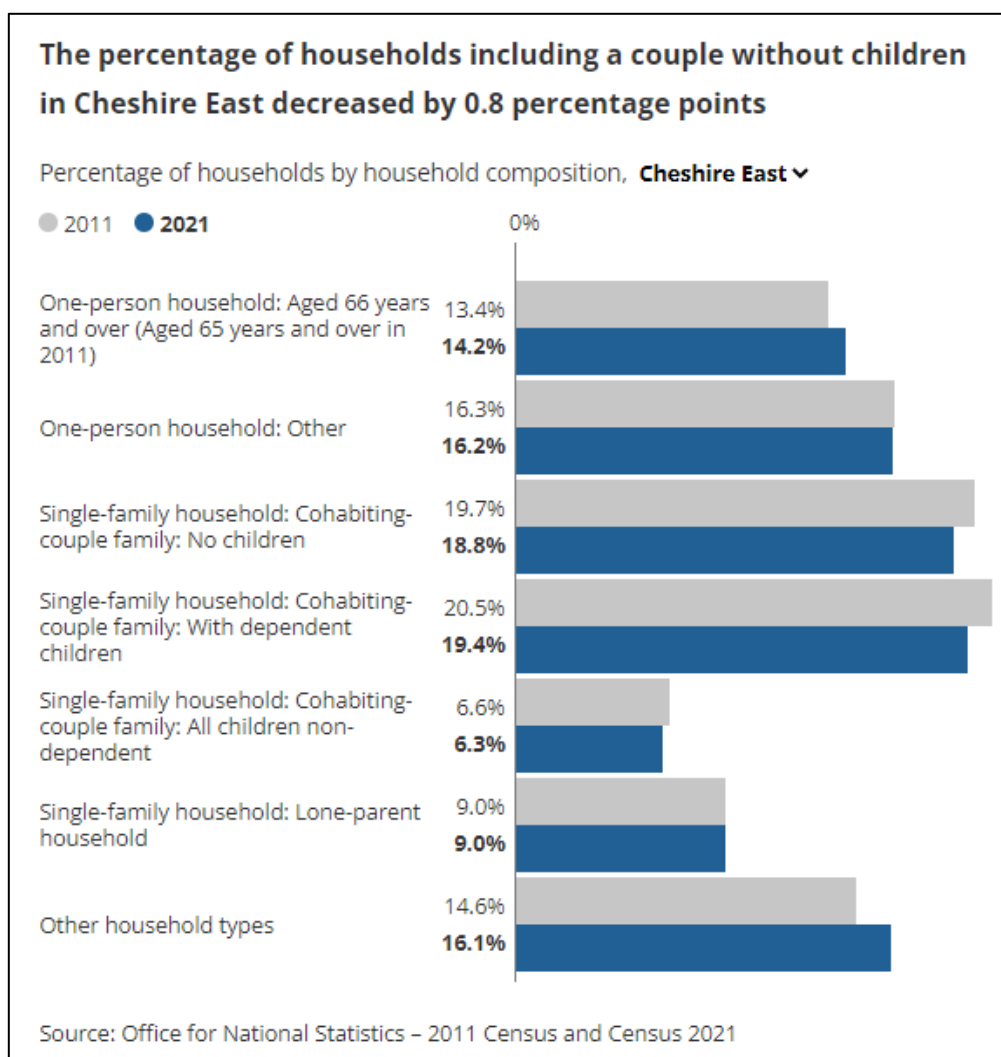
Source: Office for National Statistics – 2011 Census and Census 2021

Family in Cheshire East

Of Cheshire East households, 18.8% included a couple but no children in 2021, down from 19.7% in 2011.

In 2021, just under one in five households (19.4%) included a couple with dependent children, compared with 20.5% in 2011. The percentage of single family households including a couple living with only non-dependent children decreased from 6.6% to 6.3%.

The decrease in the percentage of households including a couple but no children was greater in Cheshire East (0.8 percentage points) than across the North West (0.5 percentage points, from 16.5% to 16.0%). Across England, the percentage fell by 0.9 percentage points, from 17.6% to 16.8%.



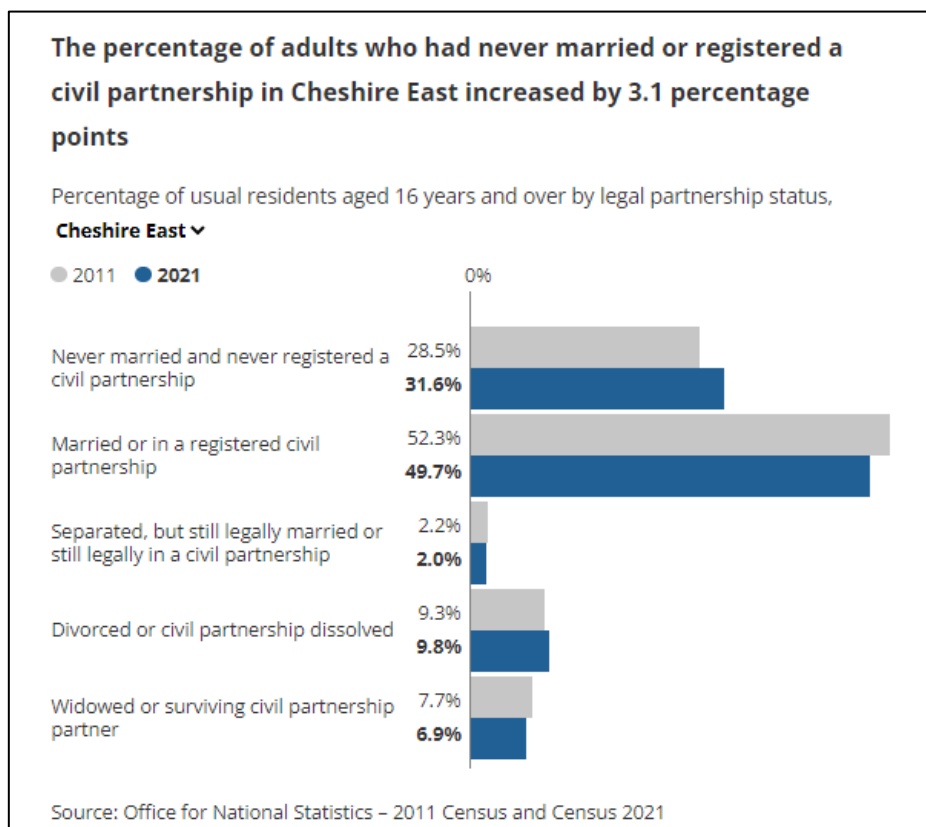
More adults never married or in a civil partnership

Of Cheshire East residents aged 16 years and over, 31.6% said they had never been married or in a civil partnership in 2021, up from 28.5% in 2011.

In 2021, just under one in two people (49.7%) said they were married or in a registered civil partnership, compared with 52.3% in 2011. The percentage of adults in Cheshire East that had divorced or dissolved a civil partnership increased from 9.3% to 9.8%.

The increase in the percentage of people aged 16 years and over who had never been married or in a civil partnership was greater across the North West (3.8 percentage points, from 35.6% to 39.4%) than in Cheshire East (3.1 percentage points). Across England, the percentage increased by 3.3 percentage points, from 34.6% to 37.9%.

These figures include same-sex marriages and opposite-sex civil partnerships in 2021, neither of which were legally recognised in England and Wales in 2011. Same-sex marriages have been legally recognised in England and Wales since 2014 and opposite-sex civil partnerships have been recognised since 2019.



Ethnic groups in Cheshire East

In 2021, 2.4% of Cheshire East residents identified their ethnic group within the "Asian, Asian British or Asian Welsh" category, up from 1.6% in 2011. The 0.8 percentage-point change was the largest increase among high-level ethnic groups in this area.

Across the North West, the percentage of people from the "Asian, Asian British or Asian Welsh" ethnic group increased from 6.2% to 8.4%, while across England the percentage increased from 7.8% to 9.6%.

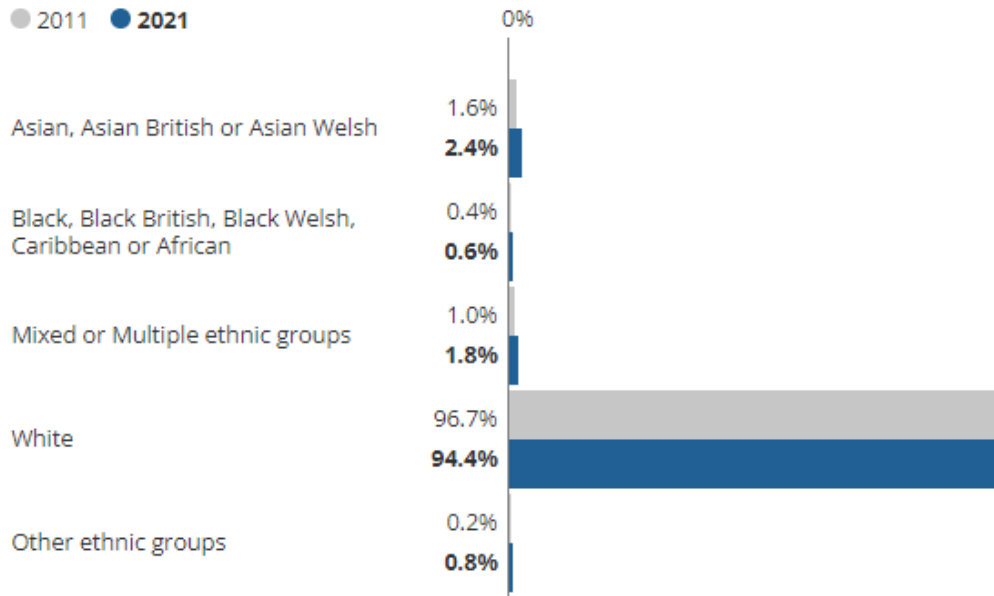
In 2021, 94.4% of people in Cheshire East identified their ethnic group within the "White" category (compared with 96.7% in 2011), while 1.8% identified their ethnic group within the "Mixed or Multiple" category (compared with 1.0% the previous decade).

The percentage of people who identified their ethnic group within the "Other" category ("Arab" or "Any other ethnic group") increased from 0.2% in 2011 to 0.8% in 2021.

There are many factors that may be contributing to the changing ethnic composition of England and Wales, such as differing patterns of ageing, fertility, mortality, and migration. Changes may also be caused by differences in the way individuals chose to self-identify between censuses.

In 2021, 2.4% of usual residents in Cheshire East identified their ethnic group within the "Asian, Asian British or Asian Welsh" category

Percentage of usual residents by ethnic group, **Cheshire East** ▼



Source: Office for National Statistics – 2011 Census and Census 2021